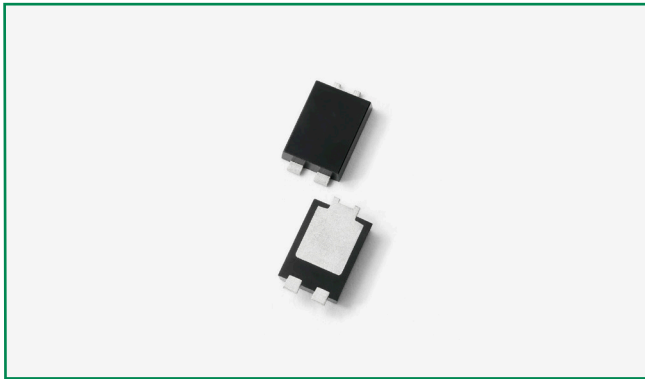
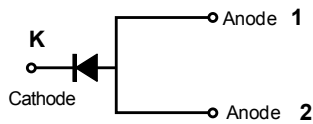


DST1545S



### Pin out



### Description

Littelfuse DST series Ultra Low  $V_F$  Schottky Barrier Rectifier is designed to meet the general requirements of commercial and industry applications by providing high temperature, low leakage and lower  $V_F$  products.

It is suitable for high frequency switching mode power supply, free-wheeling diodes and polarity protection diodes.

### Features

- Ultra low forward voltage drop
- High frequency operation
- MSL: Level 1 - unlimited
- High junction temperature capability
- Trench MOS Schottky technology
- Single die in TO-277B Package
- Pb-free E3 means 2nd level interconnect is Pb-free and the terminal finish material is tin(Sn) (IPC/ JEDEC J-STD-609A.01)

### Applications

- Switching mode power supply
- DC/DC converters
- Free-Wheeling diodes
- Polarity Protection Diodes

### Maximum Ratings

Parameters	Symbol	Test Conditions	Max	Unit
Peak Inverse Voltage	$V_{RWM}$	-	45	V
Average Forward Current	$I_{F(AV)}$	50% duty cycle @ $T_L = 125^\circ\text{C}$ rectangular wave form	15	A
Peak One Cycle Non-Repetitive Surge Current	$I_{FSM}$	8.3 ms, half Sine pulse	200	A

### Electrical Characteristics

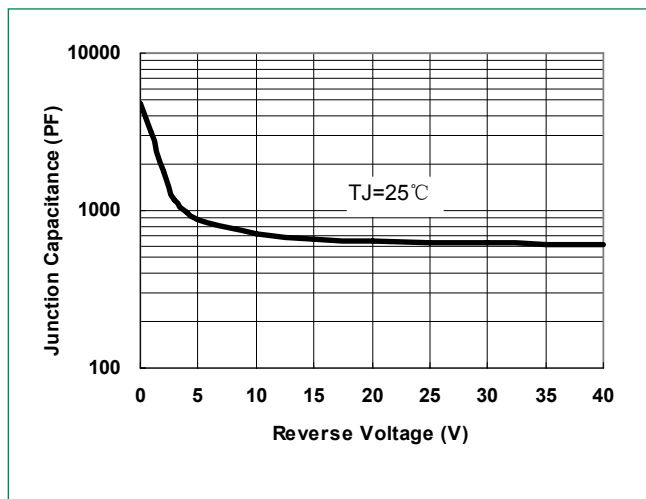
Parameters	Symbol	Test Conditions	Typ	Max	Unit
Forward Voltage Drop*	$V_{F1}$	@5A, Pulse, $T_J = 25^\circ\text{C}$	0.38	0.50	V
		@7.5A, Pulse, $T_J = 25^\circ\text{C}$	0.40	0.52	
		@15A, Pulse, $T_J = 25^\circ\text{C}$	0.46	0.58	
	$V_{F2}$	@5A, Pulse, $T_J = 125^\circ\text{C}$	0.25	0.39	
		@7.5A, Pulse, $T_J = 125^\circ\text{C}$	0.28	0.42	
		@15A, Pulse, $T_J = 125^\circ\text{C}$	0.37	0.51	
Reverse Current*	$I_{R1}$	@ $V_R = \text{rated } V_R, T_J = 25^\circ\text{C}$	0.21	1.5	mA
	$I_{R2}$	@ $V_R = \text{rated } V_R, T_J = 125^\circ\text{C}$	150	150	
Junction Capacitance	$C_T$	@ $V_R = 5\text{V}, T_C = 25^\circ\text{C}, f_{SIG} = 1\text{MHz}$	868	-	pF

\* Pulse Width < 300 $\mu\text{s}$ , Duty Cycle < 2%

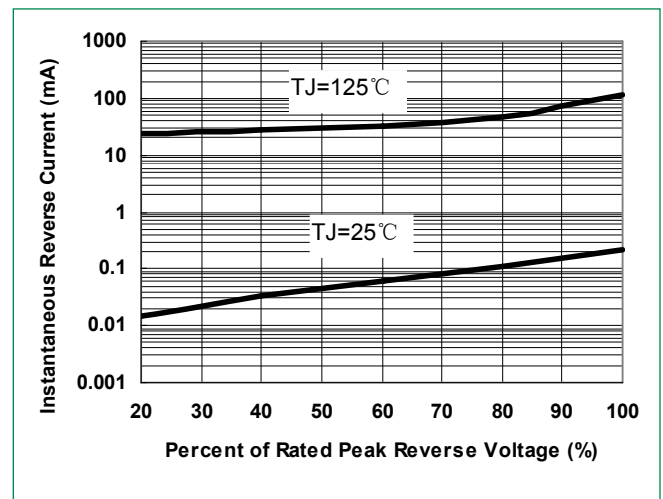
### Thermal-Mechanical Specifications

Parameters	Symbol	Test Conditions	Max	Unit
Junction Temperature	$T_J$		-55 to +150	°C
Storage Temperature	$T_{stg}$		-55 to +150	°C
Maximum Thermal Resistance Junction to Ambient	$R_{thJA}$	DC operation	75	°C/W
Maximum Thermal Resistance Junction to Lead	$R_{thJL}$		3.5	°C/W
Approximate Weight	wt		0.08	g
Case Style		TO-277B		

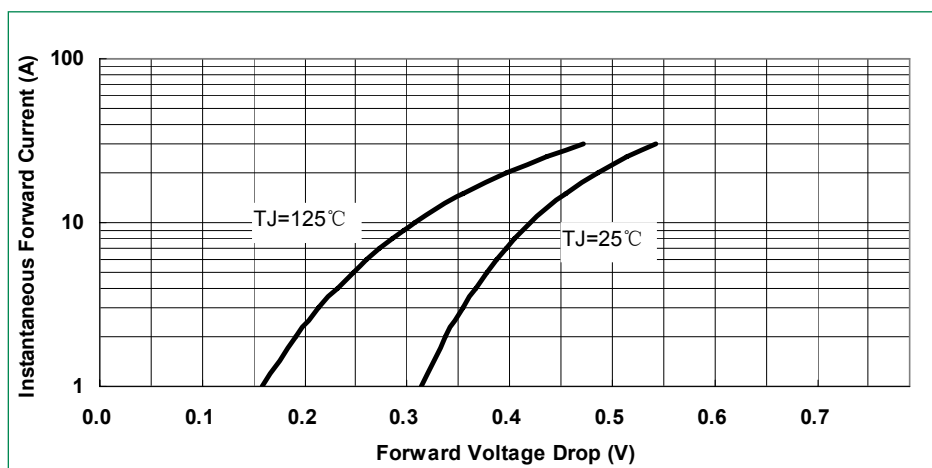
**Figure 1: Typical Junction Capacitance**



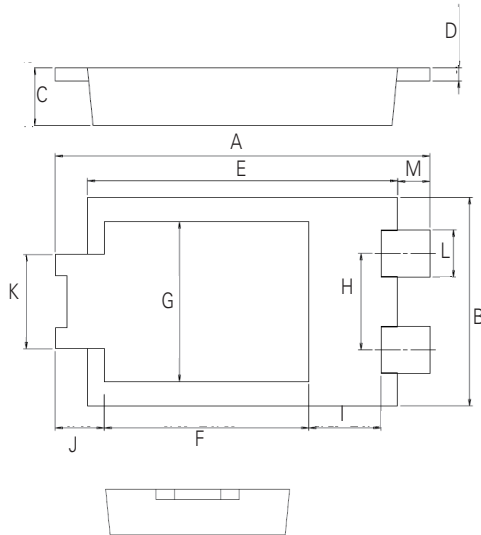
**Figure 2: Typical Reverse Characteristics**



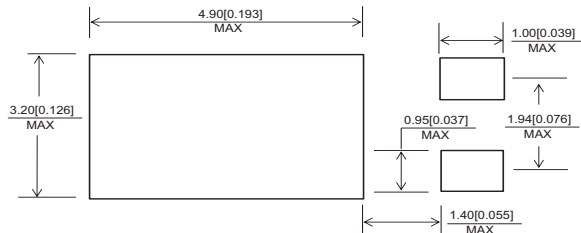
**Figure 3: Typical Instantaneous Forward Voltage Characteristics**



### Dimensions-TO-277B



Mounting Pad Layout



Symbol	Millimeters		
	Min	Typ	Max
<b>A</b>	6.30	6.50	6.70
<b>B</b>	3.88	3.98	4.08
<b>C</b>	0.95	1.10	1.25
<b>D</b>	0.20	0.25	0.30
<b>E</b>	5.28	5.38	5.48
<b>F</b>	3.40	3.55	3.70
<b>G</b>	2.90	3.05	3.20
<b>H</b>	1.74	1.84	1.94
<b>I</b>	1.10	1.25	1.40
<b>J</b>	-	0.85	-
<b>K</b>	1.70	1.80	1.90
<b>L</b>	0.85	0.90	0.95
<b>M</b>	-	0.56	-

### Part Numbering and Marking System

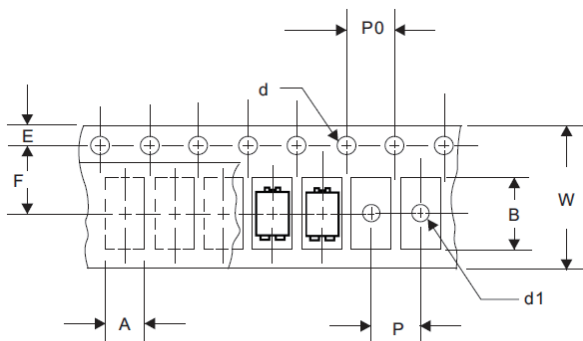


DST = Device Type  
 15 = Forward Current (15A)  
 45 = Reverse Voltage (45V)  
 S = Package Type  
 LF = Littelfuse  
 YY = Year  
 WW = Week  
 L = Lot Number

### Packing Options

Part Number	Marking	Packing Mode	M.O.Q
DST1545S	DST1545S	5000pcs / Reel	5000

### Carrier Tape & Reel Specification



Symbol	Millimeters	
	Min	Max
<b>A</b>	4.28	4.48
<b>B</b>	6.80	7.00
<b>d</b>	1.40	1.60
<b>d1</b>	-	1.50
<b>E</b>	1.65	1.85
<b>F</b>	5.40	5.60
<b>P</b>	7.90	8.10
<b>P0</b>	3.90	4.10
<b>W</b>	11.70	12.30