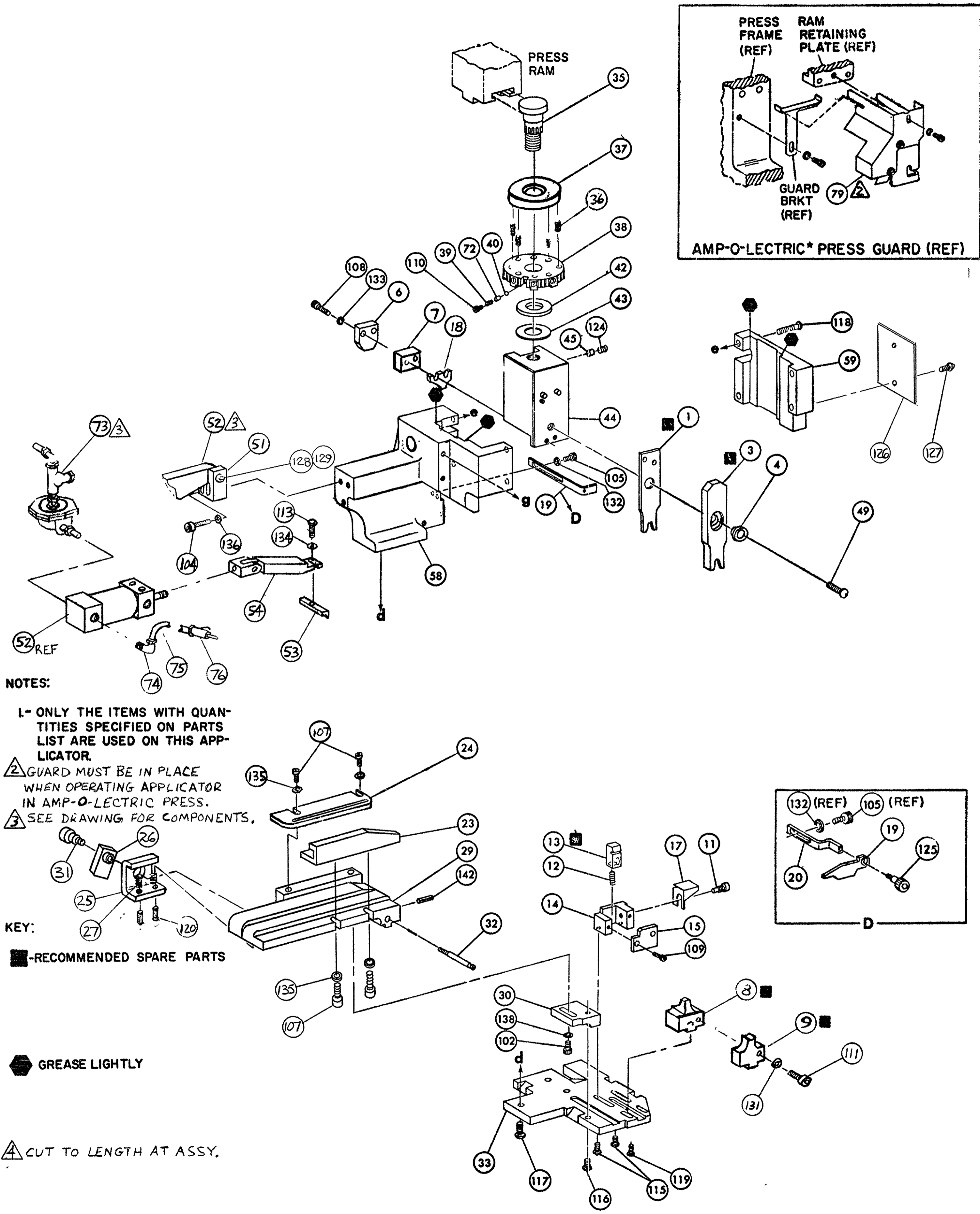


THIS DRAWING IS A CONTROLLED DOCUMENT



NOTES:

1- ONLY THE ITEMS WITH QUANTITIES SPECIFIED ON PARTS LIST ARE USED ON THIS APPLICATOR.

△ GUARD MUST BE IN PLACE WHEN OPERATING APPLICATOR IN AMP-O-LECTRIC PRESS.

△ SEE DRAWING FOR COMPONENTS.

KEY:

■ -RECOMMENDED SPARE PARTS

● GREASE LIGHTLY

△ CUT TO LENGTH AT ASSY.

QTY	PART NO	DESCRIPTION	ITEM NO
			145
			144
			143
1	4-21028-0	PIN, SLOT SPR. (.093 DIA. X .75) STR. G. PLATE	142
			141
			140
			139
1	21024-5	WASHER, LOCK (NO 10) SG ADJ. BLOCK	138
			137
2	21024-5	WASHER, LOCK (NO 10) AIR FEED ASSY.	136
4	21024-2	WASHER, LOCK (NO 4) STRIP GUIDES	135
1	21024-4	WASHER, LOCK (NO 9) FEED FINGER	134
2	21024-4	WASHER, LOCK (NO 8) DEPRESSOR	133
1	21024-4	WASHER, LOCK (NO 8) STRIPPER	132
1	21024-4	WASHER, LOCK (NO 8) INSULATION ANVIL	131
			130
1	21024-8	WASHER, LOCK (3/8)	129
1	3-21001-5	SCR, SHC (3/8-16x1.00)	128
2	21017-2	SCREW, DRIVE #2 X.19	127
1	461264-1	PLATE, IDENTIFICATION	126
1	456567-1	SCR, SHLD (.138 DIA. X.125 LG) STRIPPER	125
1	21009-2	SCR, SKT. SET (1/4-20 X.25) (LOC-WEL) RAM	124
			123
			122
1	4-21002-8	SCR, BUT.HD.SKT.CAP (3/8-16 X.1.00) AIR FEED	121
2	5-21006-6	SCR, SET (10-32 X.75) DRAG	120
1	22733-8	SCR, BUT.HD.SKT.CAP (8-32 X.38) (LOC-WEL) ANVIL	119
4	2-21002-9	SCR, BUT.HD.SKT.CAP (10-32 X.75) CAP	118
3	17177-1	SCR, BUT.HD.SKT.CAP (1/4-20 X.75) HOUSING	117
1	2-21002-7	SCR, BUT.HD.SKT.CAP (10-32 X.50) SG ADJ. BLK.	116
2	2-21002-2	SCR, BUT.HD.SKT.CAP (8-32 X.50) SHEAR	115
			114
1	2-21000-6	SCR, SKT.HD. CAP (8-32 X.38) FEED FINGER	113
			112
1	2-21000-8	SCR, SKT.HD. CAP (8-32 X.62) INSULATION ANVIL	111
1	23030-1	SCR, SKT.HD. CAP (6-32 X.25) (LOC-WEL) CP DISC	110
2	1-21002-6	SCR, BUT.HD. CAP (6-32 X.25) REAR SHEAR PLT.	109
2	3-21000-1	SCR, SKT.HD. CAP (8-32 X.98) DEPRESSOR	108
4	1-21000-4	SCR, SKT.HD. CAP (4-40 X.38) F IR STR. GUIDE	107
			106
1	2-21000-7	SCR, SKT.HD. CAP (8-32 X.50) STRIPPER	105
2	3-21000-9	SCR, SKT.HD. CAP (10-32 X.1.00) AIR FEED ASSY.	104
			103
1	3-21000-4	SCR, SKT.HD. CAP (10-32 X.38) SG ADJ. BLOCK	102
			101
1	462992-5	GUARD ASSY.	100
			99
			98
			97
			96
			95
			94
			93
			92
			91
			90
			89
			88
			87
			86
			85
			84
			83
			82
			81
			80
			79
			78
			77
			76
			75
			74
			73
			72
			71
			70
			69
			68
			67
			66
			65
			64
			63
			62
			61
			60

QTY	PART NO	DESCRIPTION	ITEM NO
			145
			144
			143
			142
			141
			140
			139
			138
			137
			136
			135
			134
			133
			132
			131
			130
			129
			128
			127
			126
			125
			124
			123
			122
			121
			120
			119
			118
			117
			116
			115
			114
			113
			112
			111
			110
			109
			108
			107
			106
			105
			104
			103
			102
			101
			99
			98
			97
			96
			95
			94
			93
			92
			91
			90
			89
			88
			87
			86
			85
			84
			83
			82
			81
			80
			79
			78
			77
			76
			75
			74
			73
			72
			71
			70
			69
			68
			67
			66
			65
			64
			63
			62
			61
			60

REMARKS	NO	REV
APPL USED ON MACHINE PART NO	MACH SERIAL NO	TO APPLY TERMINAL 114-100Z
CUSTOMER NAME	APPL SERIAL NO	DISTRIBUTION ORIGINAL
ADDRESS	PURCHASE ORDER	CUSTOMER COPY
CITY	ENG APP	FIELD ENG COPY

CRIMPING DATA	APPLICATOR WILL APPLY				
PAD LTR	CRIMP HEIGHT	WIRE SIZE	STRIP LENGTH	PIDG	PG
A/B	.132	12-10		RINGS SPADES	RINGS SPADES
B	NOT USED			640794 640795 640836	640837
C	NOT USED			640797	640838 640839
D	NOT USED				
CRIMP	SIZE	TYPE	FEED	APPL IN FT	
WIRE	.283	—			
INSUL	.343	—	450-800	A1 8063	
WIRE RANGE	INSULATION RANG	PRESS NO			
12-10	250 MAX.	565435-5			

REMARKS: AMP-O-LECTRIC AIR FEED

△ USE .25 DIA 50/50 SOLDER TO CHECK CRIMP HEIGHT

FASTONS: 640906, 640936

AMP INCORPORATED Harrisburg Pa

AMP 2983-3 (4-76)