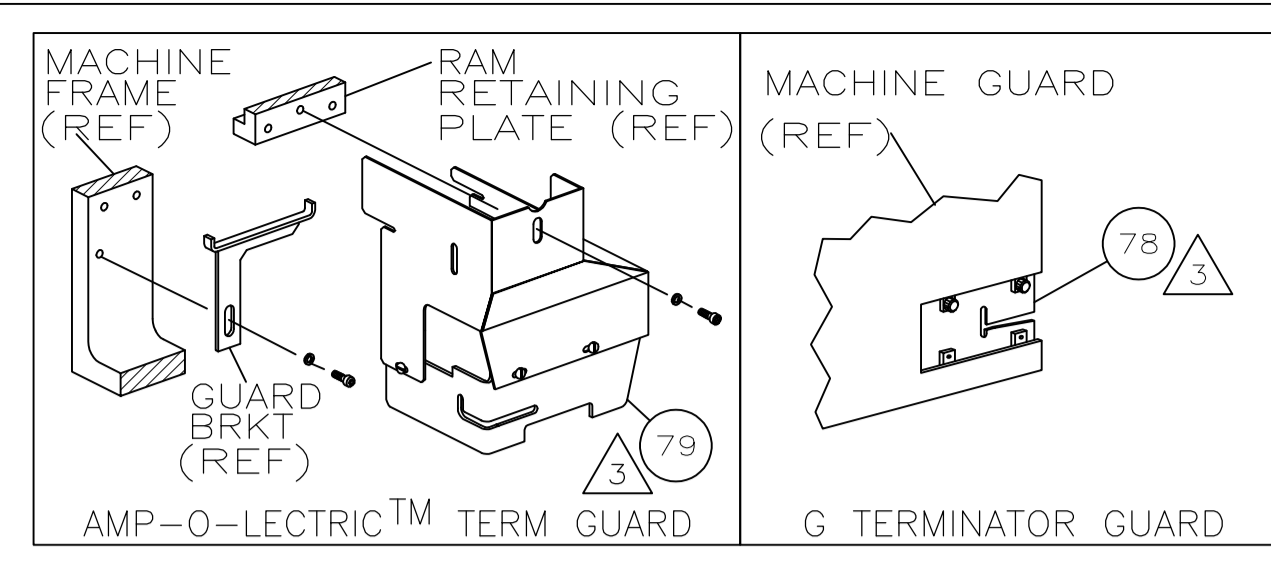


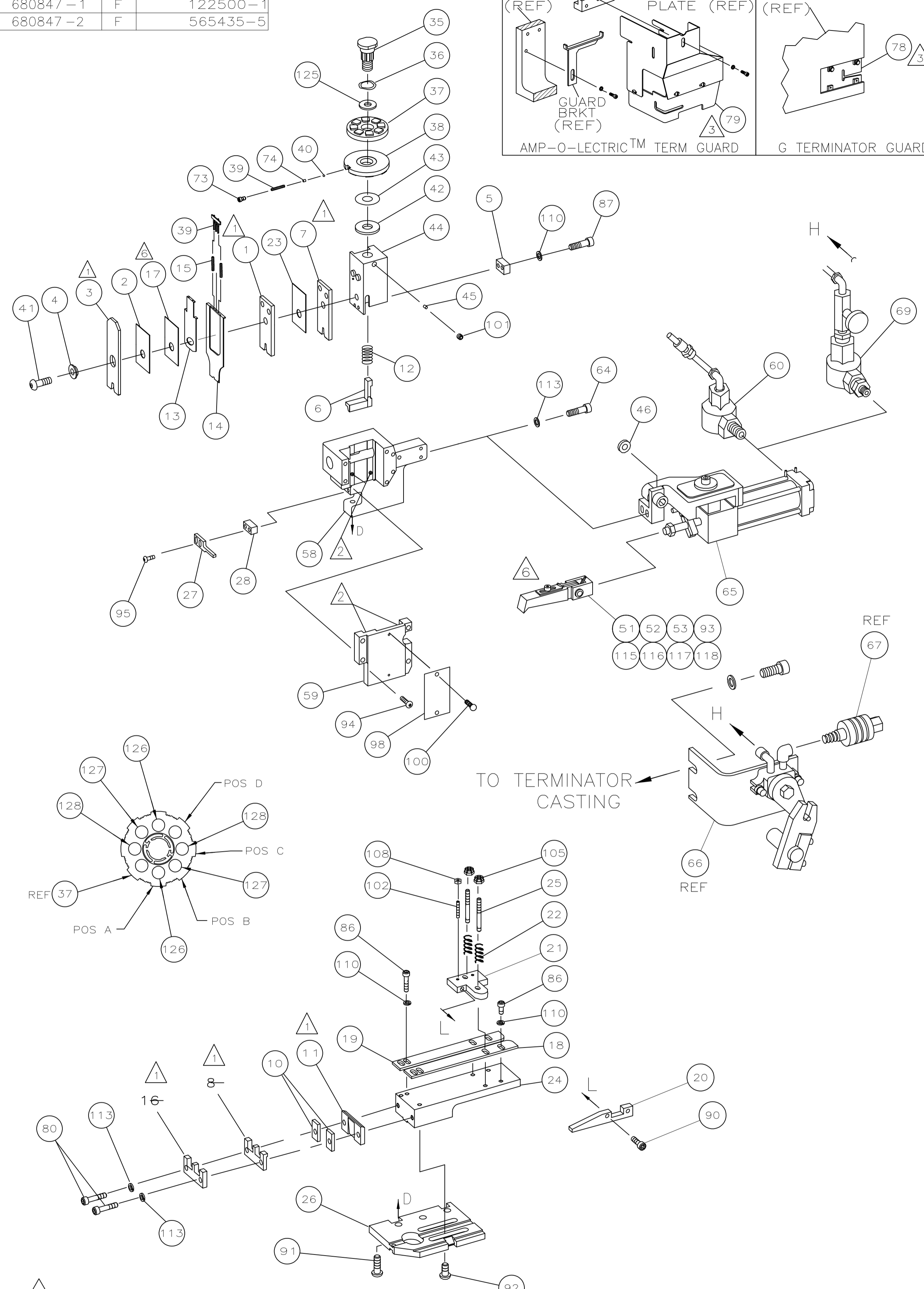
THIS DRAWING IS A CONTROLLED DOCUMENT.

PART NUMBER	REV	FIRST USED
680847-1	F	122500-1
680847-2	F	565435-5



TERMINAL NAME: .250 FLAG POS LOCK		172761	
CRIMP DATA (AMP TERMINAL)			
PAD LTR	CRIMP HEIGHT	WIRE SIZE	
A	.063 ±.002 [1.61 ±0.05mm]	18	
B	.058 ±.002 [1.47 ±0.05mm]	20	
C	.056 ±.002 [1.41 ±0.05mm]	22	
D	NOT	USED	
CRIMP	SIZE	TYPE	RANGE
WIRE	.080 [2.03mm]	F	22-18
INSUL	.142 [3.61mm]	0	△ 7 .059-.110
WIRE STRIP LENGTH	TERM APPL SPEC	FEED	APPL INSTRUCTION
.177-.216	114-5070	.748	408-8039
			SET UP GAGE LAYOUT
			458638-1 L2259

REV	DESCRIPTION	DATE
-1	LEADMAKER & BENCH MODEL G	AIR FEED
-2	BENCH MODEL K	AIR FEED



QTY REQD PER ASSY	REV	DESCRIPTION	ITEM NO	
			129	
2	2	5-354779-4 PIN, WIRE DISC (.3260)C	128	
2	2	4-354779-8 PIN, WIRE DISC (.3230)B	127	
2	2	3-354779-8 PIN, WIRE DISC (.3180)A	126	
1	1	986950-1 WASHER, FLAT PRECISION	125	
1	1	217238-1 GENERAL INSTRUCTION PACKAGE	124	
1	1	4088039 EF APPL INST 408-8039	123	
			122	
			121	
			120	
			119	
1	1	374999 PLATE, TENSION ADJ	118	
1	1	374112 SPRING, FEED FINGER	117	
1	1	2-23620-9 PIN, FEED FINGER	116	
2	2	21045-6 RING, RETAINING	115	
			114	
3	3	21024-5 WASHER,LOCK(#10)AIR ASSY	113	
			112	
			111	
4	4	21024-4 WASHER,LOCK(NO.8)SHEAR BL	110	
			109	
2	2	21018-4 NUT,HEX(4-40)DRAG	108	
			107	
			106	
2	2	21022-2 NUT,HEX SL(8-32)DRAG STUD	105	
			104	
			103	
2	2	4-21078-8 SCR,SKT SET(4-40x.62)DRAG	102	
1	1	21009-2 SCR,SKT SET(1/4-20x.25)RAM	101	
2	2	21017-2 SCR,DRIVE(#2x.19)ID PLATE	100	
			99	
1	1	461264-1 PLATE, IDENTIFICATION	98	
			97	
			96	
2	2	2-21002-4 SCR,BHC(8-32x.75)STRIPPER	95	
4	4	2-21002-9 SCR,BHC(10-32x.75)CAP	94	
2	2	22733-8 SCR,BHC(8-32x.38 LW)ANVIL	93	
4	4	3-21002-3 SCR,BHC(1/4-20x.50)ST GD PL	92	
3	3	2-22733-8 SCR,BHC(1/4-20x.62)HSG	91	
2	2	1-21000-3 SCR,SHC(4-40x.25)DRAG	90	
			89	
			88	
2	2	2-21000-6 SCR,SHC(8-32x.38)SLUG BLADE	87	
4	4	2-22603-3 SCR,HEX(8-32x.50)STRIP GUIDE	86	
			85	
			84	
			83	
			82	
			81	
2	2	4-21000-0 SCR,SHC(10-32x1.25)SHEAR PL	80	
1	-	455750-7 GUARD ASSY	79	
-	REF	679532-1 INSERT, GUARD	78	
			77	
			76	
			75	
1	1	690603-1 SPRING, ASSIST	74	
1	1	23030-1 SCR,SKT CAP(6-32x.25)CP DSC	73	
			72	
			71	
QTY REQD PER ASSY	REV	PART NO	DESCRIPTION	ITEM NO

QTY REQD PER ASSY	REV	PART NO	DESCRIPTION	ITEM NO
4	1	-	692655-5 AIR FEED VALVE ASSY	70
			VALVE, SHUT OFF	69
			24042-2 AIR FEED VALVE ASSY	68
			692655-6 AIR FEED VALVE ASSY	67
			2-460277-1 AIR FEED ASSY (1 INCH)	66
			3-21000-9 SCR,SHC(10-32x1.00)AIR ASSY	65
				64
				63
				62
				61
				60
				59
				58
				57
				56
				55
				54
				53
				52
				51
				50
				49
				48
				47
				46
				45
				44
				43
				42
				41
				40
				39
				38
				37
				36
				35
				34
				33
				32
				31
				30
				29
				28
				27
				26
				25
				24
				23
				22
				21
				20
				19
				18
				17
				16
				15
				14
				13
				12
				11
				10
				9
				8
				7
				6
				5
				4
				3
				2
				1
QTY REQD PER ASSY	REV	PART NO	DESCRIPTION	ITEM NO

- △ 1 RECOMMENDED SPARE PARTS.
- △ 2 GREASE LIGHTLY.
- △ 3 GUARD MUST BE IN PLACE WHEN OPERATING APPLICATOR IN A BENCH MACHINE.
- △ 4 SEE DRAWING FOR COMPONENTS
- △ 5 ITEM 78 USED WITH G TERMINATOR ONLY.
- △ 6 USE 8-32x 3/8 BHCS (2-21002-1) TO HOLD FEED FINGER TIP BECAUSE OF CLEARANCE.
- △ 7 CHECK INSULATION CRIMP HEIGHT TO SPEC.

LOC A	DIST 66	03-2013	XZ	LZ	APVD	DATE	DATE	DATE	DATE
F ECR-13-004386		03-2013	XZ	LZ	APVD	DATE	DATE	DATE	DATE
P LTR REVISION RECORD		DATE	DATE	DATE	DATE	DATE	DATE	DATE	DATE
DIMENSIONS: INCHES		TOLERANCES UNLESS OTHERWISE SPECIFIED:		0 PLC ± .010		1 PLC ± .005		2 PLC ± .0025	
ANGLES: -		SURFACE TEXTURE: √		SCALE: A1		SIZE: 680847		DRAWING NO: 680847	
DRAWN: C.ERISMAN		14JUL99		MATERIAL: -		HEAT TREAT: -		CHK: C.ERISMAN	
APVD: T.ELBIN		14JUL99		NAME: T.ELBIN		END FEED HDM APPLICATOR		SHEET 1 OF 1	
REV: F		REV: F		REV: F		REV: F		REV: F	

CUSTOMER ACCESSIBLE PRODUCTION DRAWING