

REVISION J

RCU-X-XX.XX-AMS-AMS BOM			
ITEM NO.	PART NUMBER	QTY	DESCRIPTION
1	UCA-03-01	XX.XX	CABLE
2	USBP-A-01-G-B-01	2	CONNECTOR
3	LTC-14-02-N	4	LATCH
4	MD-PTC-RF-640-BK	1	PREMOLD
5	MD-NYL-ZY-70G13-BK	1	OVERMOLD
6	LABEL-ET	1	LABEL

DESIGNED & DIMENSIONED IN MILLIMETERS [INCHES]

RCU-X-XX.XX-XXX-XXX

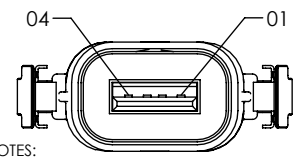
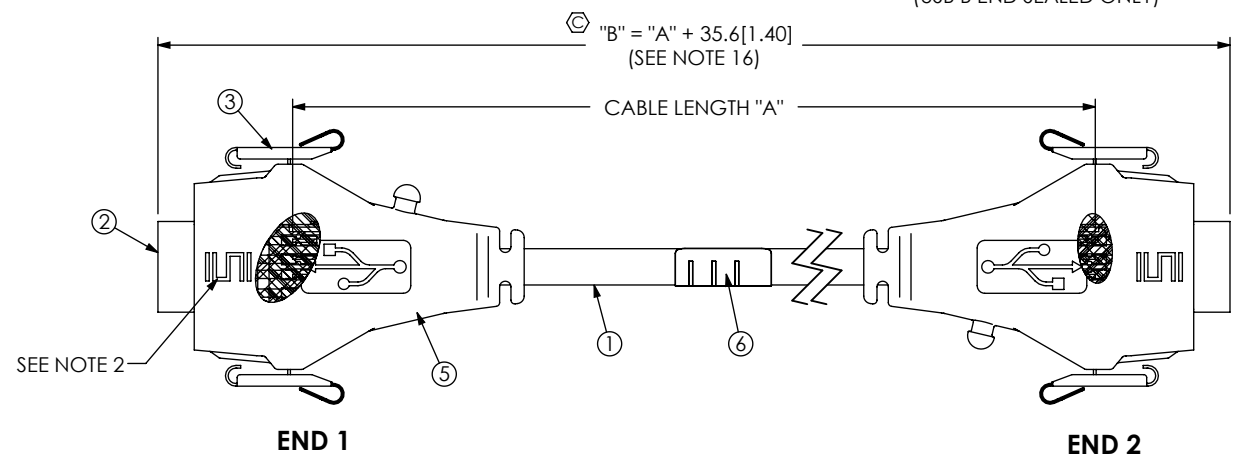
PLATING SPECIFICATION
 -G: .000030 GOLD ON CONTACT AREAS, NICKEL ON SHELLS

CABLE LENGTH
 -XX.XX: "A"
 (0.25M [9.842] MIN - 50.00M [1968.504] MAX)

END 1 OPTION
 -AMS: SEALED USB A (USB A END SEALED ONLY)
 -BMS: SEALED USB B (USB B END SEALED ONLY)

END 2 OPTION
 -AMS: USB A SEALED (USB A SEALED ONLY) (SEE FIG 1)
 -AM: USB A NOT SEALED (USB A END NOT SEALED ONLY) (SEE SHEET 2, FIG 2)
 -BC: BLUNT CUT (SEE SHEET 2, FIG 3)
 -BM: USB B NOT SEALED (USB B END NOT SEALED) (SEE SHEET 3, FIG 4)
 -BMS: USB B SEALED (USB B SEALED ONLY) (SHEET 3, FIG 5)

DO NOT SCALE FROM THIS PRINT



NOTES:

- ⊗ REPRESENTS A CRITICAL DIMENSION.
- SAMTEC LOGO TO APPEAR ON SURFACE AS SHOWN, APPROXIMATELY 6.00 [236] X 3.75 [148].
- MOLDED SURFACES SHALL BE CONSISTENT AND SMOOTH. SURFACES TO BE FREE OF SCRATCHES, NICKS, SINK AREAS, VOIDS, OR OTHER BLEMISHES.
- ALL MULTIPLE CAVITY MOLDS SHALL IDENTIFY EACH CAVITY WITH A NUMBER DESIGNATION LOCATED WHERE SHOWN.
- ALL IDENTIFICATION MARKS SHALL NOT STAND GREATER THAN 0.05 [002] OFF THE SURFACE OF THE PART.
- MOLD TO BE INSERTED TO ACCEPT DIFFERENT CABLE DIAMETERS.
- SURFACE TO BE RECESSED 0.22 [009].
- USB LOGO TO BE RAISED 0.25 [010].
- USB LOGO'S TO BE ALIGNED TO USB CONNECTORS AS SHOWN.
- LENGTHS GREATER THAN 05.00M [196.850] ARE NOT SUPPORTED BY USB 2.0 TEST DATA.
- ASSEMBLY TO BE 100% ELECTRICAL TESTED FOR OPENS AND SHORTS, HI-POT TESTED AT 200V BEFORE PREMOLD AND AFTER FINAL ASSEMBLY. AFTER FINAL ELECTRICAL TEST, LABEL EACH ASSEMBLY WITH 1 LABEL-ET.
- ALL EJECTION PIN AND GATE LOCATIONS MUST BE APPROVED BY SAMTEC PRODUCT ENGINEERING.
- ANY ADDITIONAL VOIDING AND/OR MODIFICATIONS TO VOIDING MUST BE APPROVED BY SAMTEC PRODUCT ENGINEERING.
- ALL DRAFT MUST BE WITHIN THE SPECIFIED TOLERANCES.
- ALL INSIDE/OUTSIDE RADII 0.13 [005] MAX UNLESS OTHERWISE STATED.
- TOLERANCE SHALL BE ± 2% FOR ALL LENGTHS.
- MINIMUM LATCH PUSH OUT FORCE: 2.2N [50LB].
- THIS IS A COMPONENT OF USBP-A-01-G-B-01 (CALLED OUT ON THE BOM), BUT LABELED INDIVIDUALLY FOR ASSEMBLY PURPOSES.
- THIS IS A COMPONENT OF USBP-B-01-G-B-01 (CALLED OUT ON THE BOM), BUT LABELED INDIVIDUALLY FOR ASSEMBLY PURPOSES.
- ASSEMBLY TO BE SHIPPED IN BULK PACKAGED WITH ASBBLT4X5.5 ON EACH END PER PACKAGING STANDARD CO-RF-WI-3001-M.
- NOTE DELETED.
- ANY CHANGE MADE TO -AM & -BM OVERMOLD MUST BE MADE TO SCPU-17-XX.XX-XXX-XXX.
- THIS IS A COMPONENT OF USBP-B-02-G-B-01 (CALLED OUT ON THE BOM), BUT LABELED INDIVIDUALLY FOR ASSEMBLY PURPOSES.
- MEASURE OVERMOLD IN BOTH CORNERS AND IN THE MIDDLE OF THE PART.
- USE TABLE 3, SHT 5 AND THE FIGURES BELOW FOR PIN NUMBERING AND WIRE COLOR; IGNORE ANY NUMBERING ON THE BODIES.

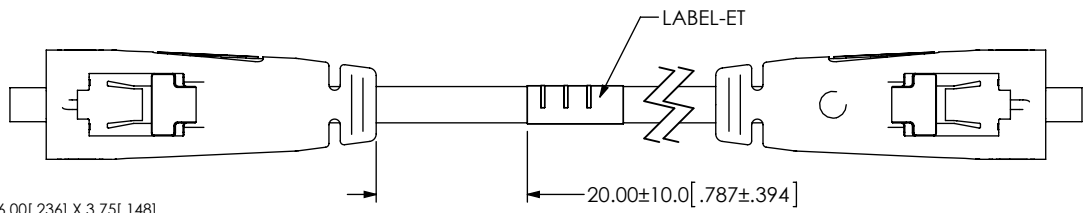



FIG 1
 RCU-X-XX.XX-AMS SHOWN

F:\DWG\MISC\MKTG\RCU-X-XX.XX-XXX-XXX-MKT.SLDDRW

UNLESS OTHERWISE SPECIFIED, DIMENSIONS ARE IN MILLIMETERS. TOLERANCES ARE: DECIMALS ANGLES X.X: ±0.3 [01] 2° X.XX: ±0.13 [005] X.XXX: ±0.051 [0020]	PROPRIETARY NOTE THIS DOCUMENT CONTAINS INFORMATION CONFIDENTIAL AND PROPRIETARY TO SAMTEC, INC. AND SHALL NOT BE REPRODUCED OR TRANSFERRED TO OTHER DOCUMENTS OR DISCLOSED TO OTHERS OR USED FOR ANY PURPOSE OTHER THAN THAT WHICH IT WAS OBTAINED WITHOUT THE EXPRESSED WRITTEN CONSENT OF SAMTEC, INC.	 520 PARK EAST BLVD, NEW ALBANY, IN 47150 PHONE: 812-944-6733 FAX: 812-948-5047 e-Mail: info@SAMTEC.com code 53322	
		DESCRIPTION: RECTANGULAR CABLE USB DWG. NO. RCU-X-XX.XX-XXX-XXX BY: T NEWTON 02/17/2010 SHEET 1 OF 10	

RCU-X-XX.XX-AMS-AM BOM			
ITEM NO.	PART NUMBER	QTY	DESCRIPTION
1	UCA-03-01	XX XX	CABLE
2	USBP-A-01-G-B-01	2	CONNECTOR
3	LTC-14-02-N	2	LATCH
4	MD-PTC-RF-640-BK	1	PREMOLD
5	MD-NYL-ZY-70G13-BK	1	OVERMOLD
6	LABEL-ET	1	LABEL
7	MD-PVC-AL-41175-BK	1	NON-SEALED OVERMOLD

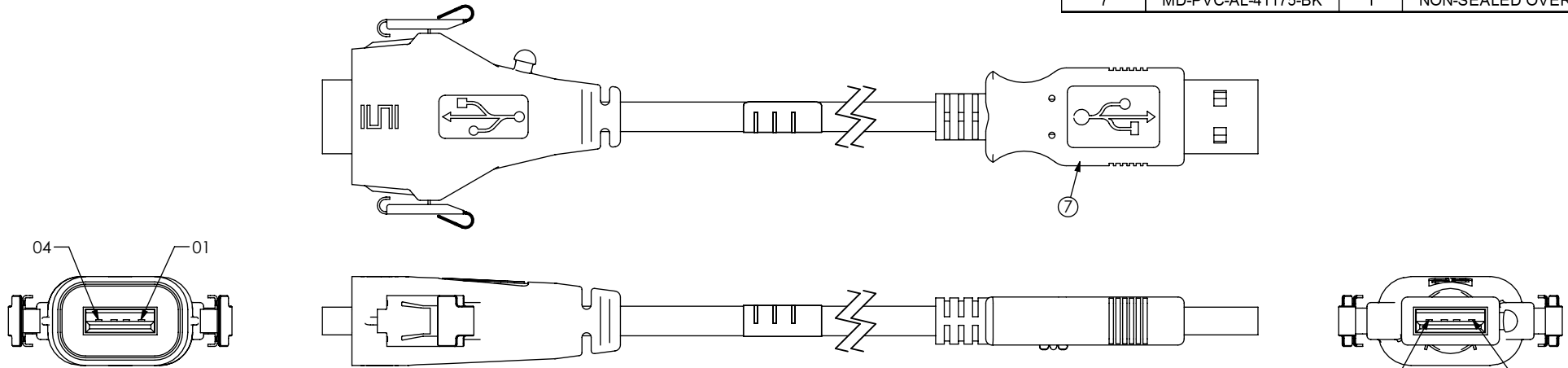


FIG 2
RCU-X-XX.XX-AMS-AM SHOWN
(SAME AS FIG 1, EXCEPT AS SHOWN)

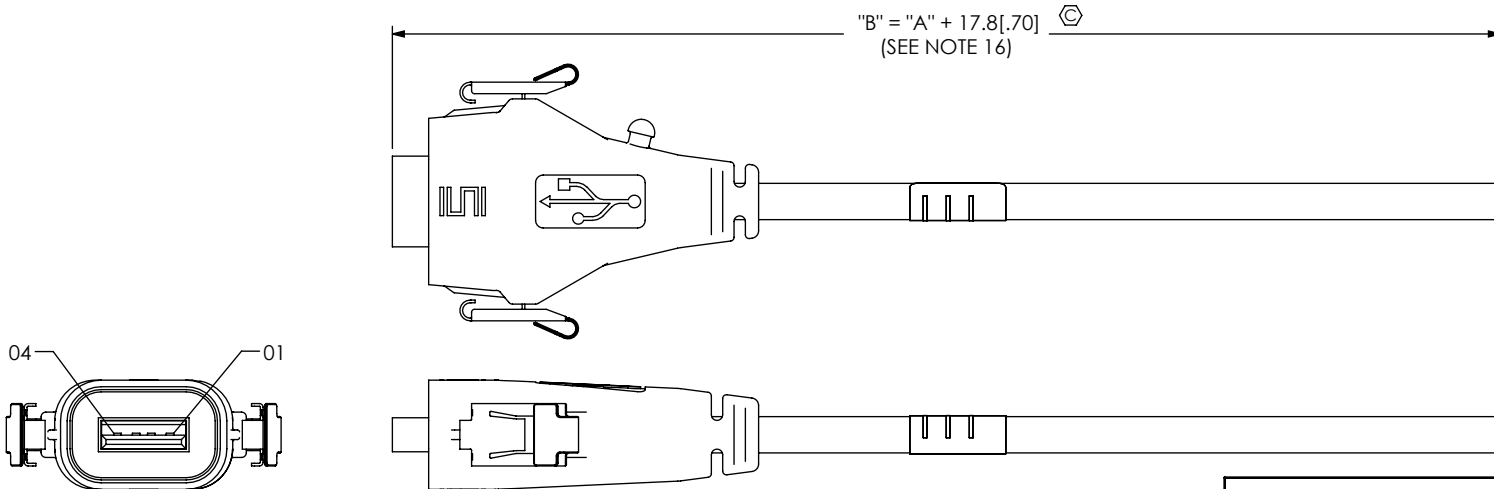


FIG 3
RCU-X-XX.XX-AMS-BC SHOWN
(SAME AS FIG 1, EXCEPT AS SHOWN)

PROPRIETARY NOTE
THIS DOCUMENT CONTAINS INFORMATION CONFIDENTIAL AND PROPRIETARY TO SAMTEC, INC. AND SHALL NOT BE REPRODUCED OR TRANSFERRED TO OTHER DOCUMENTS OR DISCLOSED TO OTHERS OR USED FOR ANY PURPOSE OTHER THAN THAT WHICH IT WAS OBTAINED WITHOUT THE EXPRESSED WRITTEN CONSENT OF SAMTEC, INC.

DO NOT SCALE DRAWING

SHEET SCALE: 1:1

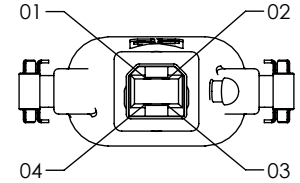
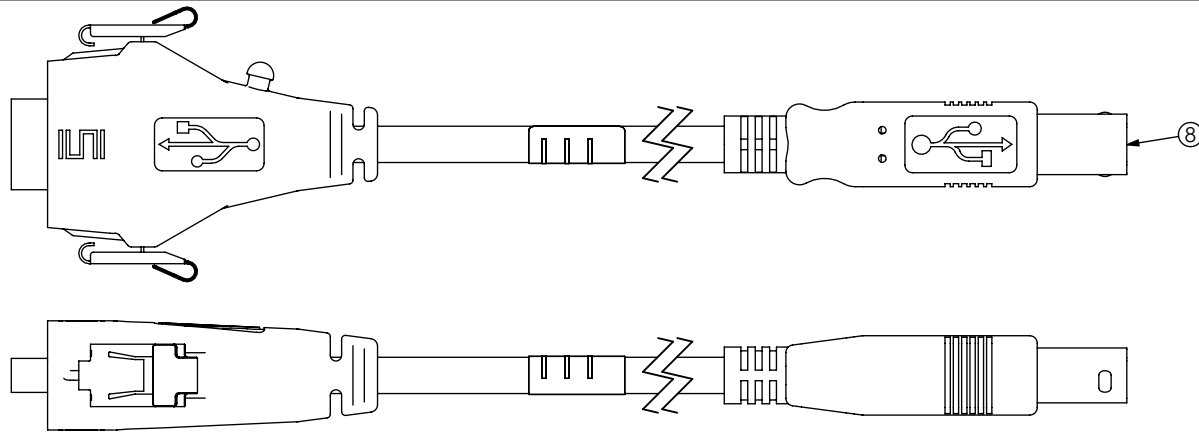
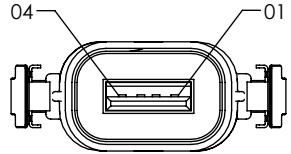
samtec

520 PARK EAST BLVD, NEW ALBANY, IN 47150
PHONE: 812-944-6733 FAX: 812-948-5047
e-Mail info@SAMTEC.com code 55322

DESCRIPTION:
RECTANGULAR CABLE USB

DWG. NO.
RCU-X-XX.XX-XXX-XXX

BY: T NEWTON 02/17/2010 SHEET 2 OF 10



RCU-X-XX.XX-AMS-BM BOM

ITEM NO.	PART NUMBER	QTY	DESCRIPTION
1	UCA-03-01	XX.XX	CABLE
2	USBP-A-01-G-B-01	1	CONNECTOR
3	LTC-14-02-N	2	LATCH
4	MD-PTC-RF-640-BK	1	PREMOLD
5	MD-NYL-ZY-70G13-BK	1	OVERMOLD
6	LABEL-ET	1	LABEL
7	MD-PVC-AL-41175-BK	1	NON-SEALED OVERMOLD
8	USBP-B-01-G-B-01	1	CONNECTOR

FIG 4
RCU-X-XX.XX-AMS-BM SHOWN
(SAME AS FIG 1, EXCEPT AS SHOWN)

ITEM NO.	PART NUMBER	QTY	DESCRIPTION
1	UCA-03-01	XX.XX	CABLE
2	USBP-A-01-G-B-01	1	CONNECTOR
3	LTC-14-02-N	4	LATCH
4	MD-PTC-RF-640-BK	1	PREMOLD
5	MD-NYL-ZY-70G13-BK	1	OVERMOLD
6	LABEL-ET	1	LABEL
7	USBP-B-02-G-B-01	1	CONNECTOR

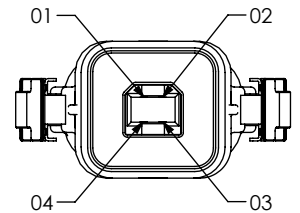
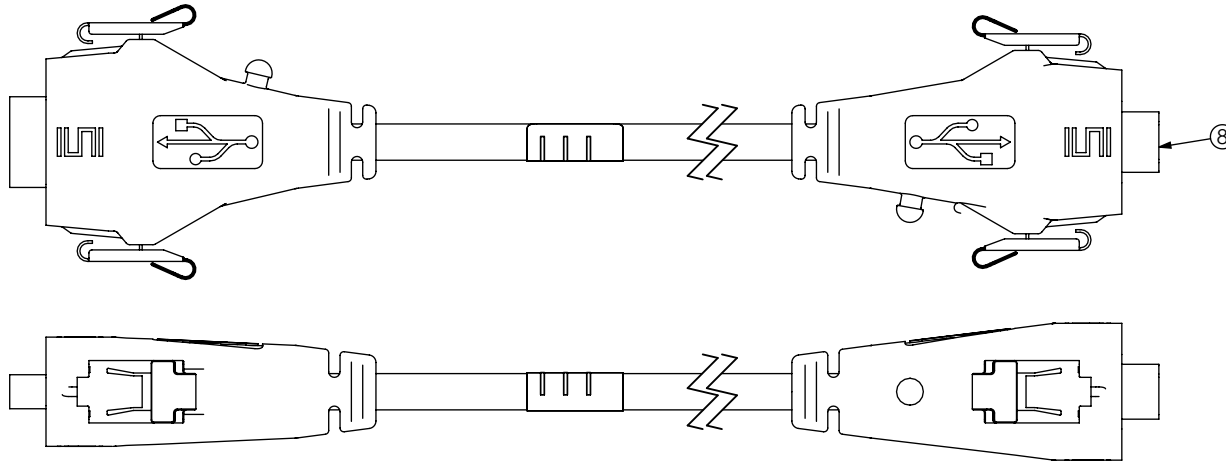
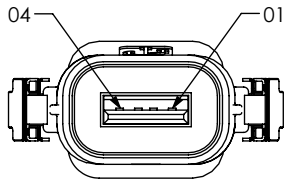


FIG 5
RCU-X-XX.XX-AMS-BMS SHOWN
(SAME AS FIG 1, EXCEPT AS SHOWN)

PROPRIETARY NOTE
THIS DOCUMENT CONTAINS INFORMATION
CONFIDENTIAL AND PROPRIETARY TO
SAMTEC, INC. AND SHALL NOT BE REPRODUCED
OR TRANSFERRED TO OTHER DOCUMENTS OR
DISCLOSED TO OTHERS OR USED FOR ANY
PURPOSE OTHER THAN THAT WHICH IT WAS
OBTAINED WITHOUT THE EXPRESSED WRITTEN
CONSENT OF SAMTEC, INC.

DO NOT SCALE DRAWING

SHEET SCALE: 1:1

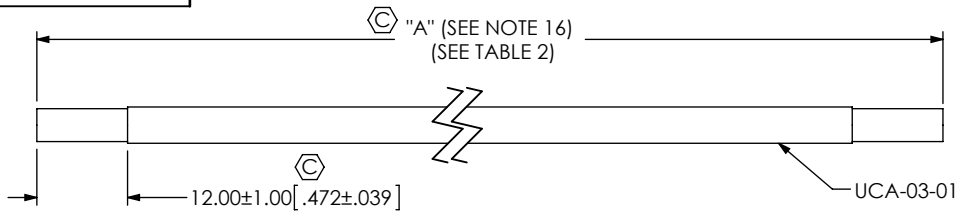
samtec

520 PARK EAST BLVD, NEW ALBANY, IN 47150
PHONE: 812-944-6733 FAX: 812-948-5047
e-Mail info@SAMTEC.com code 55322

DESCRIPTION:
RECTANGULAR CABLE USB

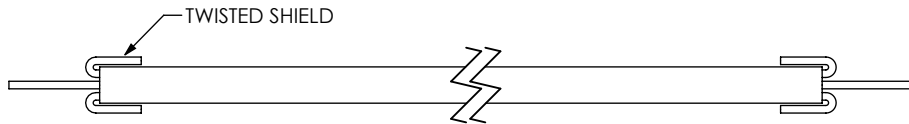
DWG. NO.
RCU-X-XX.XX-XXX-XXX

BY: T NEWTON 02/17/2010 SHEET 3 OF 10



IN-PROCESS 1
CUT CABLE TO LENGTH AND STRIP OUTER JACKET

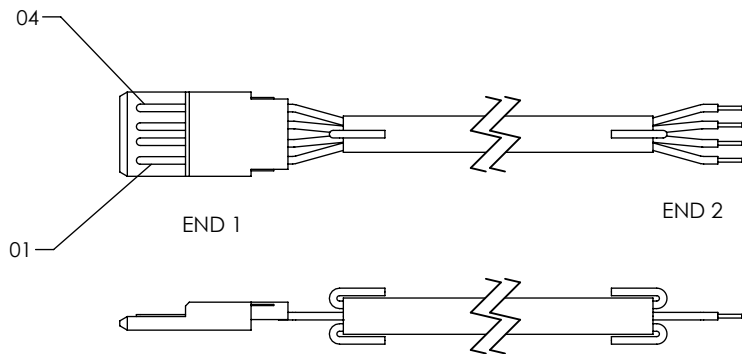
TABLE 2	
END OPTION	"A"
AMS	LENGTH IN MILLIMETERS
AM	LENGTH IN MILLIMETERS
BC	(LENGTH IN MILLIMETERS X 2) + 50.0[2.00]
BM	LENGTH IN MILLIMETERS
BMS	LENGTH IN MILLIMETERS



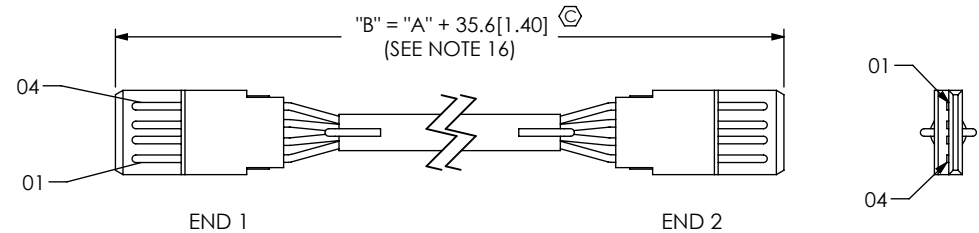
IN-PROCESS 2
FOLD SHIELD BACK, REMOVE FOIL & TWIST SHIELD



IN-PROCESS 3
STRIP INDIVIDUAL WIRES AND DIP IN TIN



-AMS-XXX: IN-PROCESS 4
TERMINATE TO SUB-USB-A-G-B-01
(SEE NOTE 18 & 25)



-AMS-XXX: IN-PROCESS 5
TERMINATE SECOND END TO SUB-USB-A-G-B-01
(SEE NOTE 18 & 25)

TABLE 3		
END 1 POS	WIRE COLOR	END 2 POS
01	RED	01
02	WHITE	02
03	GREEN	03
04	BLACK	04

PROPRIETARY NOTE
THIS DOCUMENT CONTAINS INFORMATION CONFIDENTIAL AND PROPRIETARY TO SAMTEC, INC. AND SHALL NOT BE REPRODUCED OR TRANSFERRED TO OTHER DOCUMENTS OR DISCLOSED TO OTHERS OR USED FOR ANY PURPOSE OTHER THAN THAT WHICH IT WAS OBTAINED WITHOUT THE EXPRESSED WRITTEN CONSENT OF SAMTEC, INC.

DO NOT SCALE DRAWING

SHEET SCALE: 1:1

samtec

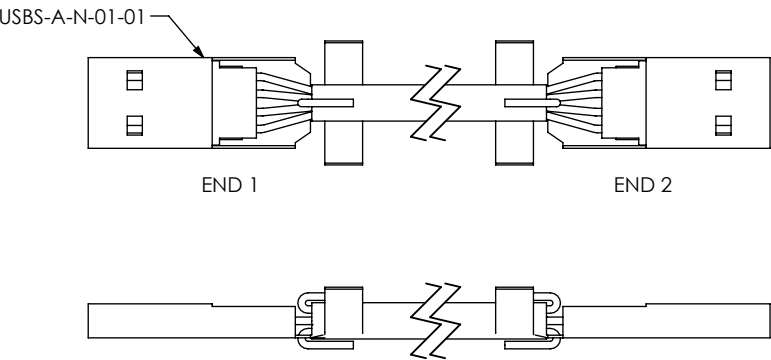
520 PARK EAST BLVD, NEW ALBANY, IN 47150
PHONE: 812-944-6733 FAX: 812-948-5047
e-Mail info@SAMTEC.com code 55322

DESCRIPTION:
RECTANGULAR CABLE USB

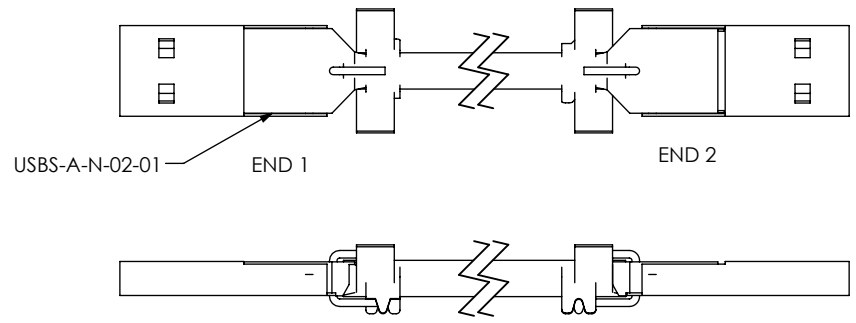
DWG. NO.
RCU-X-XX.XX-XXX-XXX

BY: T NEWTON 02/17/2010 SHEET 4 OF 10

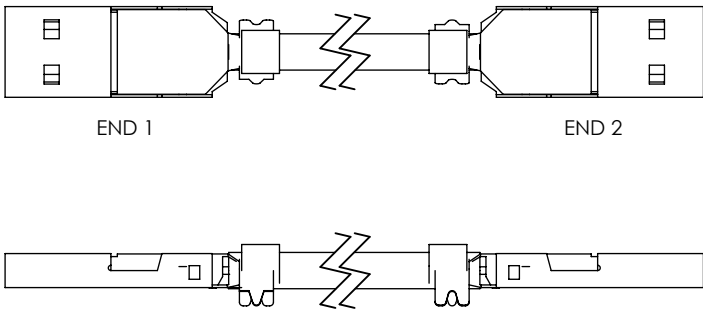
REVISION J



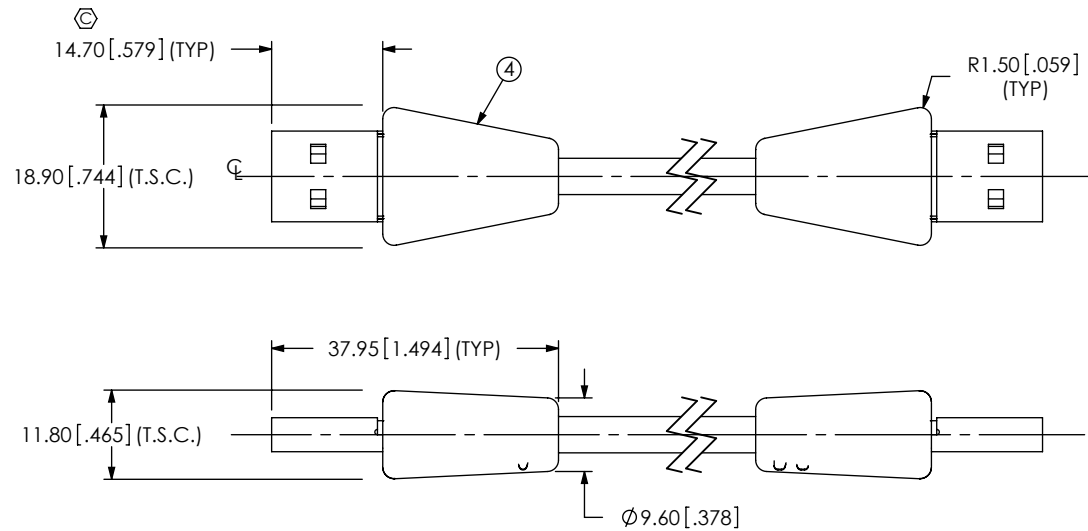
-AMS-XXX: IN-PROCESS 6
ADD USBS-A-N-01-01 SHELL
(SEE NOTE 18)



-AMS-XXX: IN-PROCESS 7
ADD USBS-A-N-02-01 SHELL
(SEE NOTE 18)



-AMS-XXX: IN-PROCESS 8
CRIMP SHELLS OVER BRAID AND TRIM EXCESS SHIELD




-AMS-AMS: IN-PROCESS 9
PREMOLD

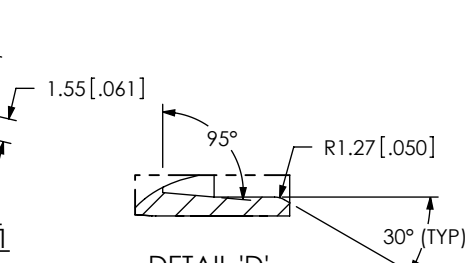
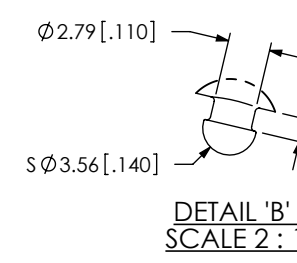
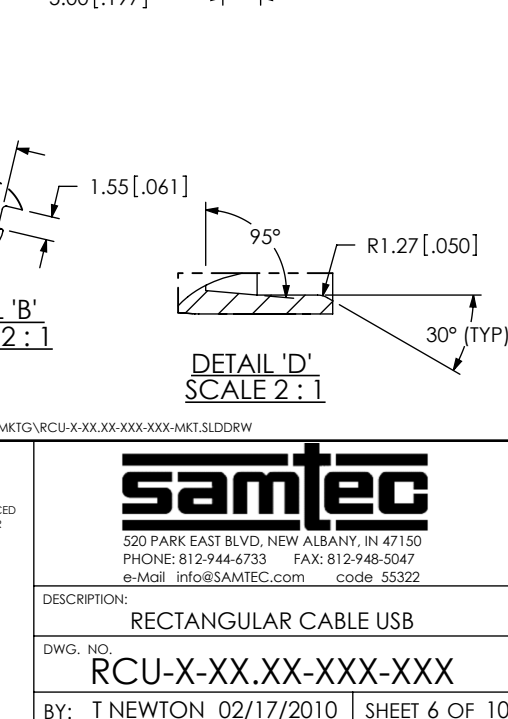
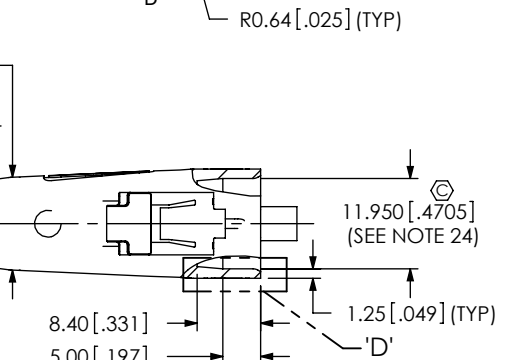
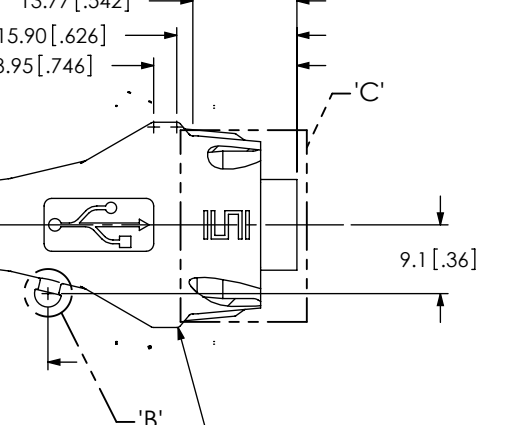
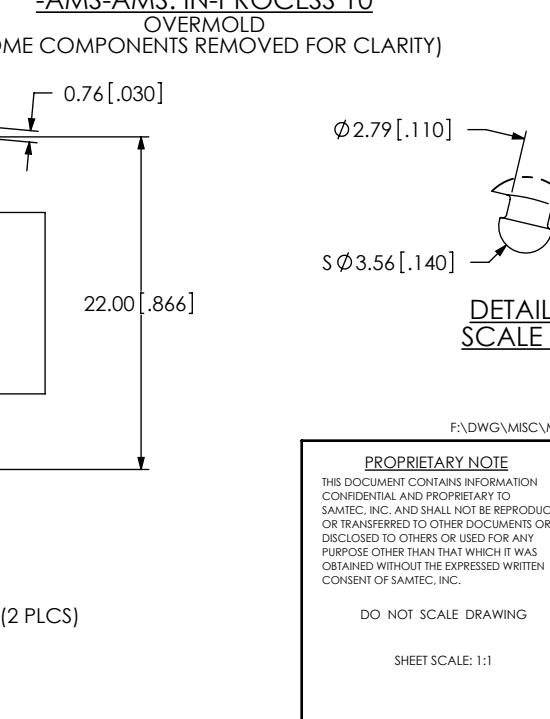
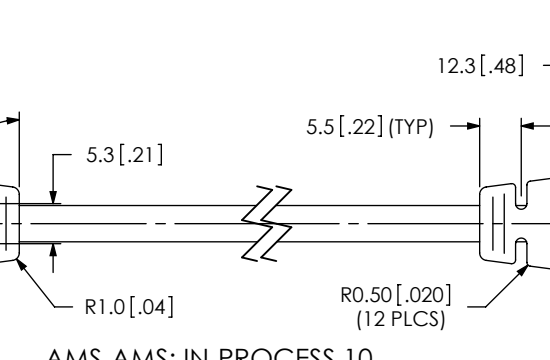
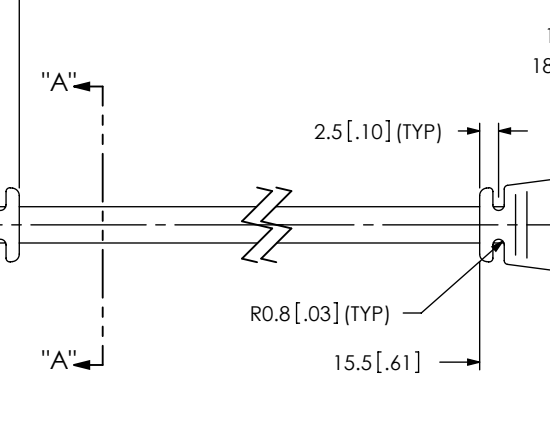
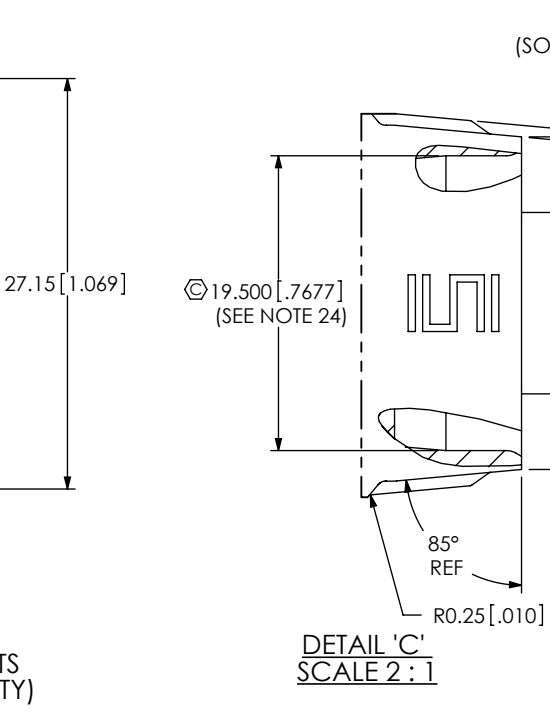
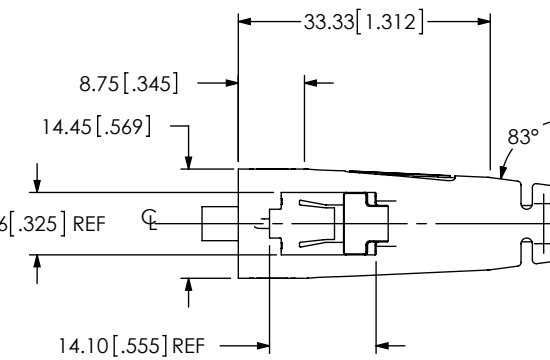
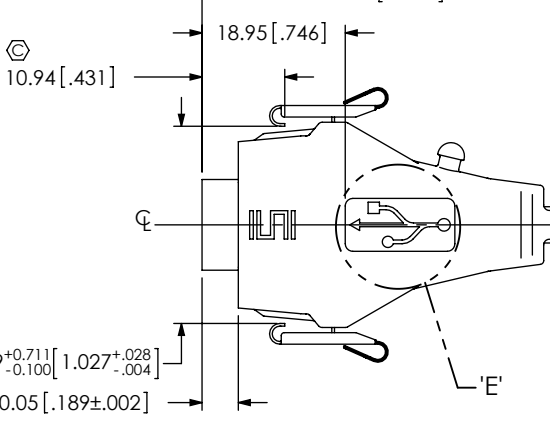
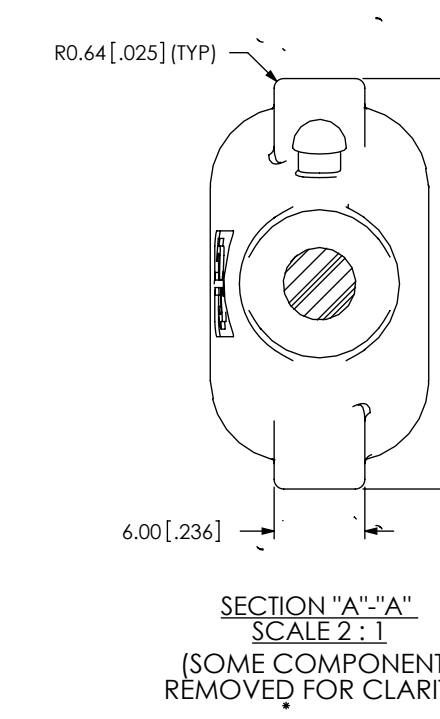
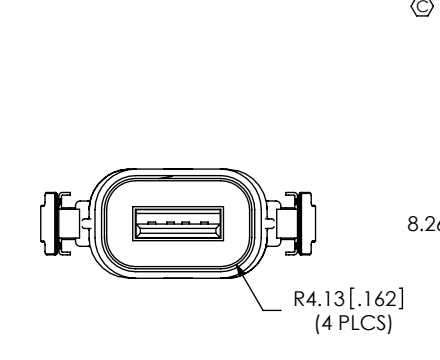
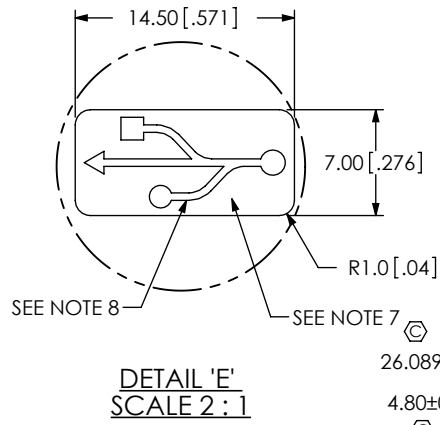
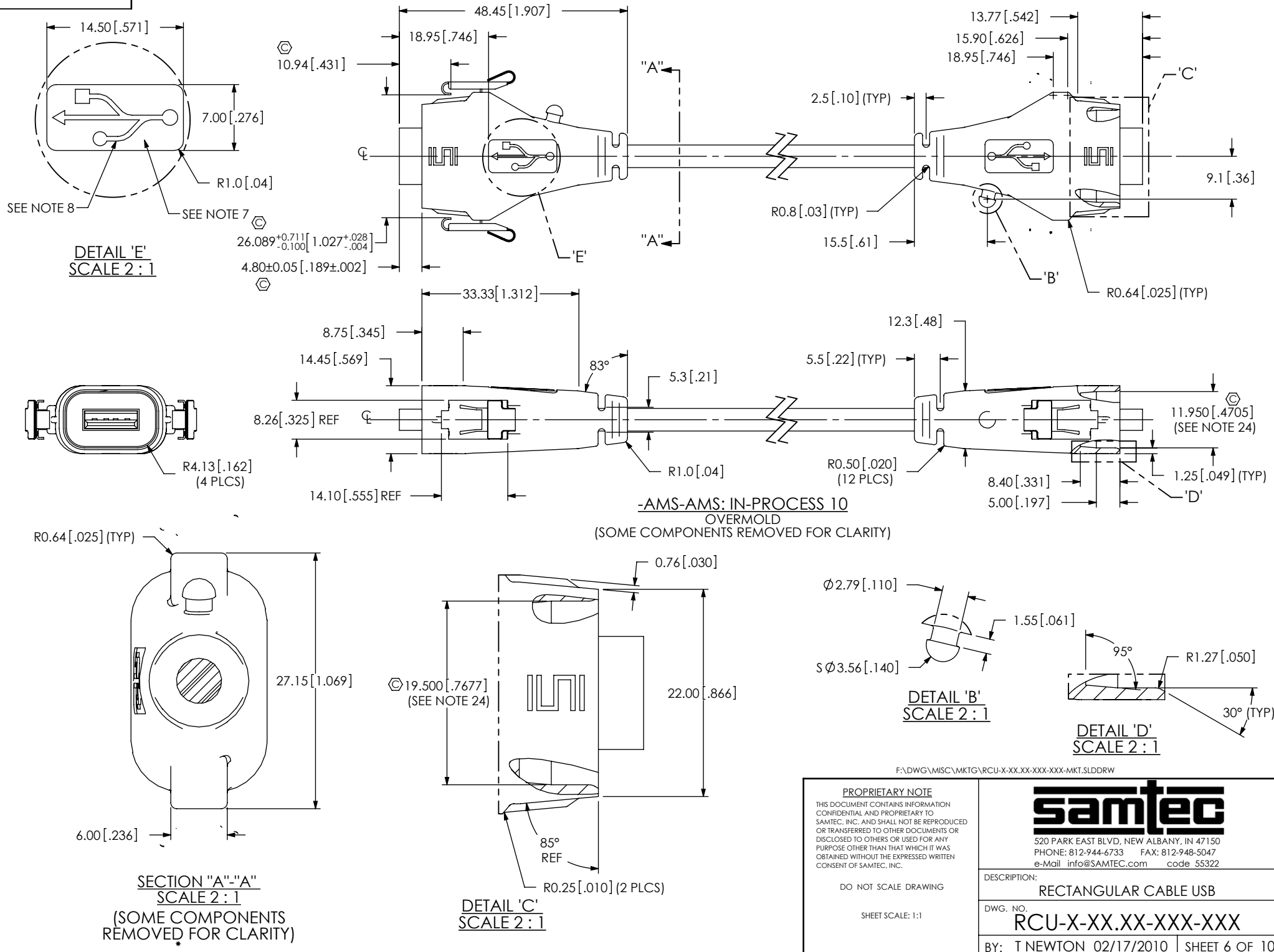
F:\DWG\MISC\MKTG\RCU-X-XX.XX-XXX-XXX-MKT.SLDDRW

PROPRIETARY NOTE
THIS DOCUMENT CONTAINS INFORMATION CONFIDENTIAL AND PROPRIETARY TO SAMTEC, INC. AND SHALL NOT BE REPRODUCED OR TRANSFERRED TO OTHER DOCUMENTS OR DISCLOSED TO OTHERS OR USED FOR ANY PURPOSE OTHER THAN THAT WHICH IT WAS OBTAINED WITHOUT THE EXPRESSED WRITTEN CONSENT OF SAMTEC, INC.

DO NOT SCALE DRAWING

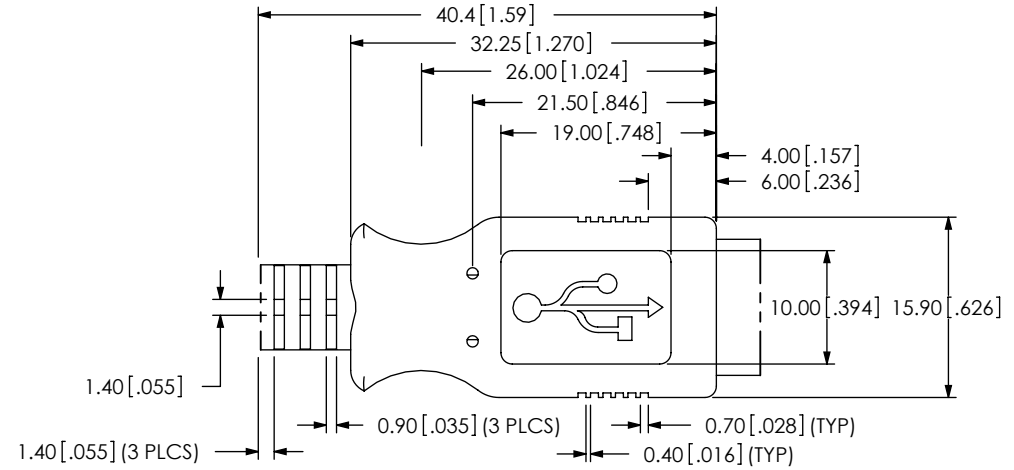
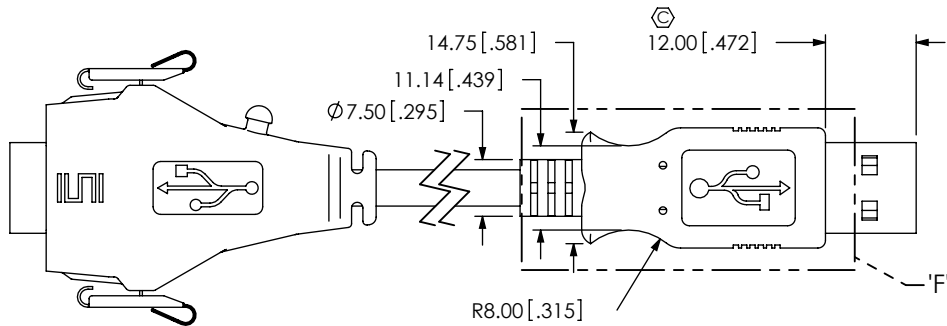
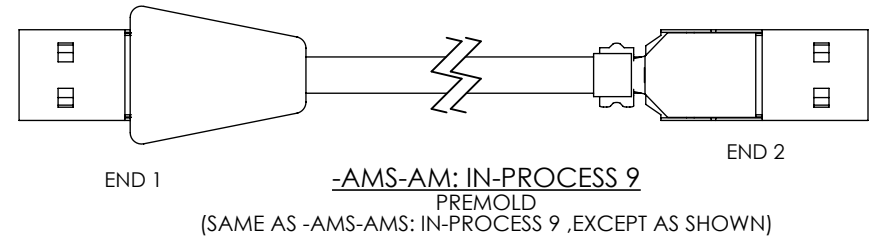
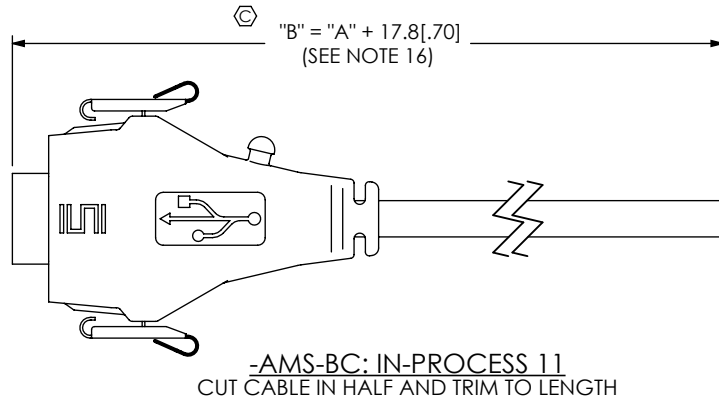
SHEET SCALE: 1:1

 520 PARK EAST BLVD, NEW ALBANY, IN 47150 PHONE: 812-944-6733 FAX: 812-948-5047 e-Mail info@SAMTEC.com code 55322	
DESCRIPTION: RECTANGULAR CABLE USB	
DWG. NO. RCU-X-XX.XX-XXX-XXX	
BY: T NEWTON 02/17/2010	SHEET 5 OF 10

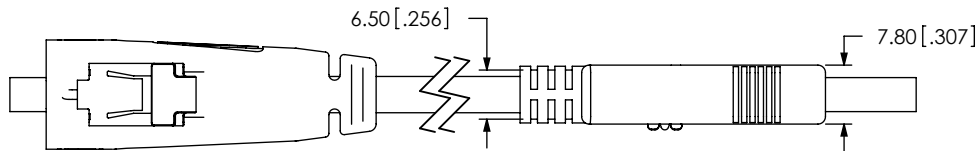


F:\DWG\MISC\MKTG\RUCU-X-XX-XX-XXX-MKT.SLDDRW

PROPRIETARY NOTE THIS DOCUMENT CONTAINS INFORMATION CONFIDENTIAL AND PROPRIETARY TO SAMTEC, INC. AND SHALL NOT BE REPRODUCED OR TRANSFERRED TO OTHER DOCUMENTS OR DISCLOSED TO OTHERS OR USED FOR ANY PURPOSE OTHER THAN THAT WHICH IT WAS OBTAINED WITHOUT THE EXPRESSED WRITTEN CONSENT OF SAMTEC, INC. DO NOT SCALE DRAWING SHEET SCALE: 1:1	
	DESCRIPTION: RECTANGULAR CABLE USB
	DWG. NO. RCU-X-XX-XX-XXX-XXX BY: T NEWTON 02/17/2010 SHEET 6 OF 10



DETAIL 'F'
SCALE 1.5 : 1
(SEE NOTE 22)



-AMS-AM: IN-PROCESS 10
OVERMOLD
(SAME AS -AMS-AMS: IN-PROCESS 10, EXCEPT AS SHOWN)

PROPRIETARY NOTE
THIS DOCUMENT CONTAINS INFORMATION CONFIDENTIAL AND PROPRIETARY TO SAMTEC, INC. AND SHALL NOT BE REPRODUCED OR TRANSFERRED TO OTHER DOCUMENTS OR DISCLOSED TO OTHERS OR USED FOR ANY PURPOSE OTHER THAN THAT WHICH IT WAS OBTAINED WITHOUT THE EXPRESSED WRITTEN CONSENT OF SAMTEC, INC.

DO NOT SCALE DRAWING

SHEET SCALE: 1:1

samtec

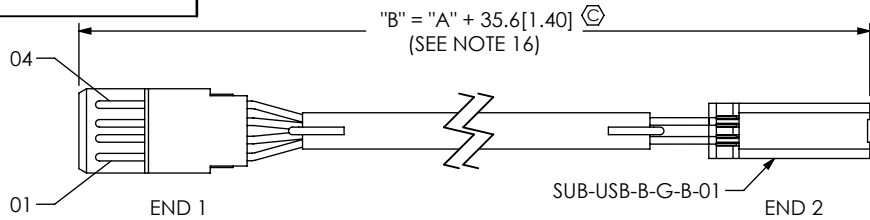
520 PARK EAST BLVD, NEW ALBANY, IN 47150
PHONE: 812-944-6733 FAX: 812-948-5047
e-Mail info@SAMTEC.com code 55322

DESCRIPTION:
RECTANGULAR CABLE USB

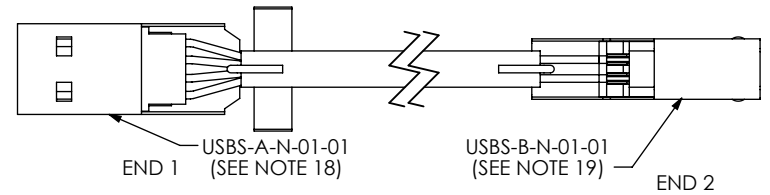
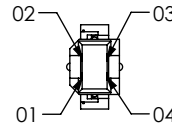
DWG. NO.
RCU-X-XX.XX-XXX-XXX

BY: T NEWTON 02/17/2010 SHEET 7 OF 10

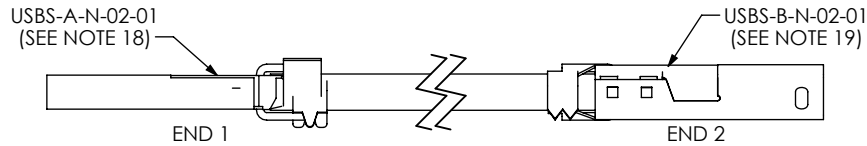
REVISION J



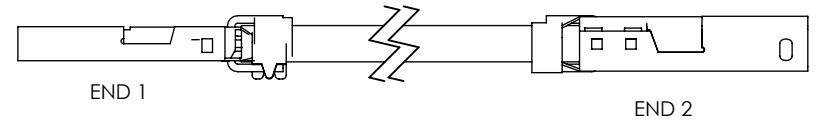
-AMS-BM: IN-PROCESS 5
 TERMINATE SECOND END TO SUB-USB-B-G-B-01
 (SAME AS -AMS-XXX: IN-PROCESS 5, EXCEPT AS SHOWN)
 (SEE NOTE 18, 19 & 25)



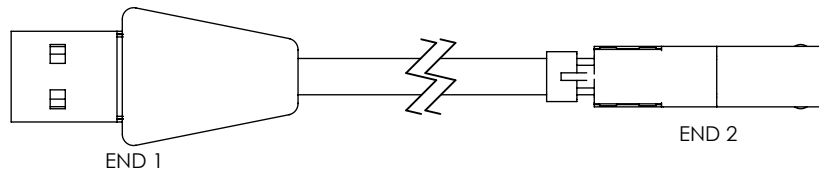
-AMS-BM: IN-PROCESS 6
 ADD USBS-A-N-01-01 & USBS-B-N-01-01 SHELLS
 (SAME AS -AMS-XXX: IN-PROCESS 6, EXCEPT AS SHOWN)
 (SEE NOTE 18 & NOTE 19)



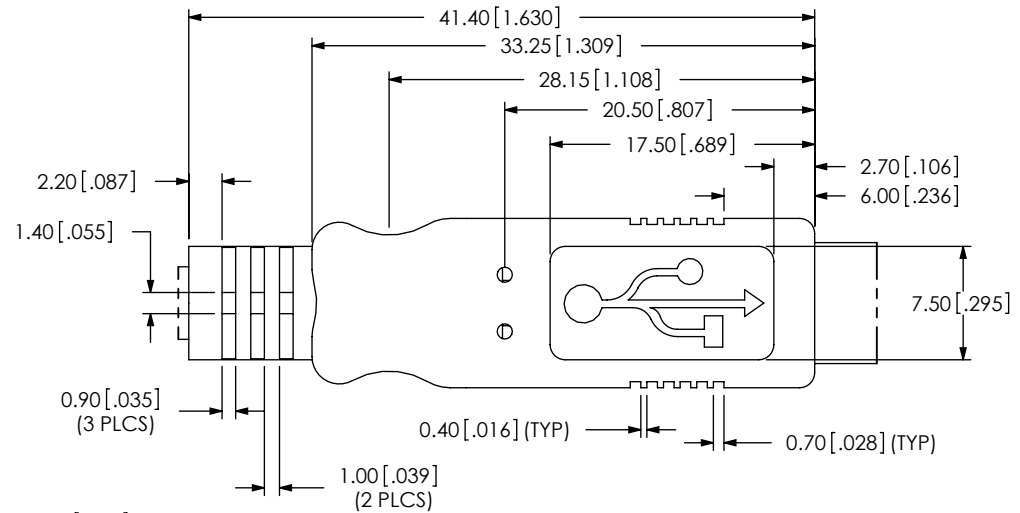
-AMS-BM: IN-PROCESS 7
 ADD USBS-A-N-02-01 & USBS-B-N-02-01 SHELLS
 (SAME AS -AMS-XXX: IN-PROCESS 7, EXCEPT AS SHOWN)
 (SEE NOTE 18 & NOTE 19)



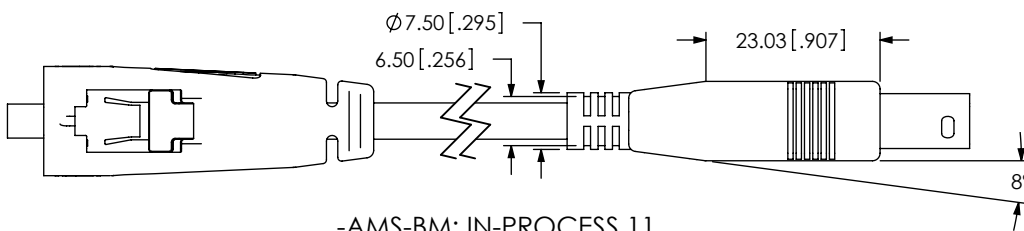
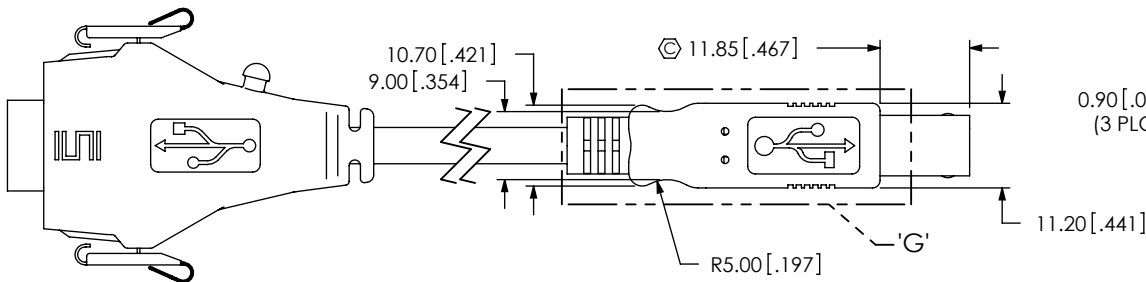
-AMS-BM: IN-PROCESS 8
 CRIMP SHELLS OVER BRAID AND TRIM EXCESS SHIELD
 (SAME AS -AMS-XXX: IN-PROCESS 8, EXCEPT AS SHOWN)



-AMS-BM: IN-PROCESS 9
 PREMOLD
 (SAME AS -AMS-AMS: IN-PROCESS 9, EXCEPT AS SHOWN)



DETAIL 'G'
SCALE 2 : 1
 (SEE NOTE 22)



-AMS-BM: IN-PROCESS 11
 OVERMOLD
 (SAME AS -AMS-AMS: IN-PROCESS 10, EXCEPT AS SHOWN)

PROPRIETARY NOTE
 THIS DOCUMENT CONTAINS INFORMATION
 CONFIDENTIAL AND PROPRIETARY TO
 SAMTEC, INC. AND SHALL NOT BE REPRODUCED
 OR TRANSFERRED TO OTHER DOCUMENTS OR
 DISCLOSED TO OTHERS OR USED FOR ANY
 PURPOSE OTHER THAN THAT WHICH IT WAS
 OBTAINED WITHOUT THE EXPRESSED WRITTEN
 CONSENT OF SAMTEC, INC.

DO NOT SCALE DRAWING

SHEET SCALE: 1:1

samtec

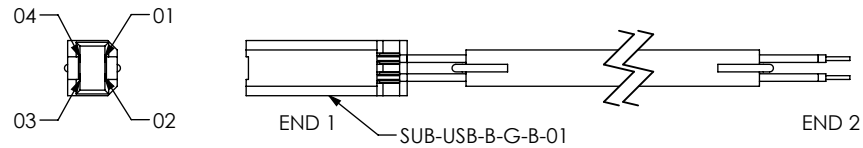
520 PARK EAST BLVD, NEW ALBANY, IN 47150
 PHONE: 812-944-6733 FAX: 812-948-5047
 e-Mail info@SAMTEC.com code 55322

DESCRIPTION:
 RECTANGULAR CABLE USB

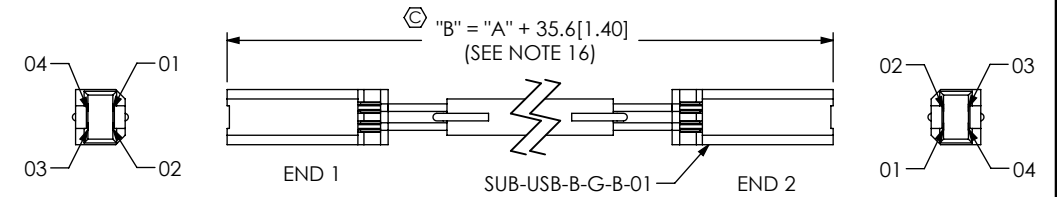
DWG. NO.
RCU-X-XX.XX-XXX-XXX

BY: T NEWTON 02/17/2010 SHEET 8 OF 10

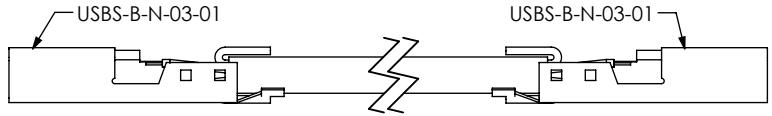
REVISION J



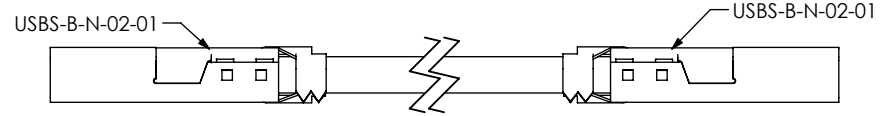
-BMS-XXX: IN-PROCESS 4
 TERMINATE TO SUB-USB-B-G-B-01
 (SAME -AMS-XXX: IN-PROCESS 4, EXCEPT AS SHOWN)
 (SEE NOTE 23 & 25)



"B" = "A" + 35.6 [1.40]
 (SEE NOTE 16)
 -BMS-BC: IN-PROCESS 5
 TERMINATE TO SUB-USB-B-G-B-01
 (SAME AS -AMS-AMS: IN-PROCESS 5, EXCEPT AS SHOWN)
 (SEE NOTE 23 & 25)



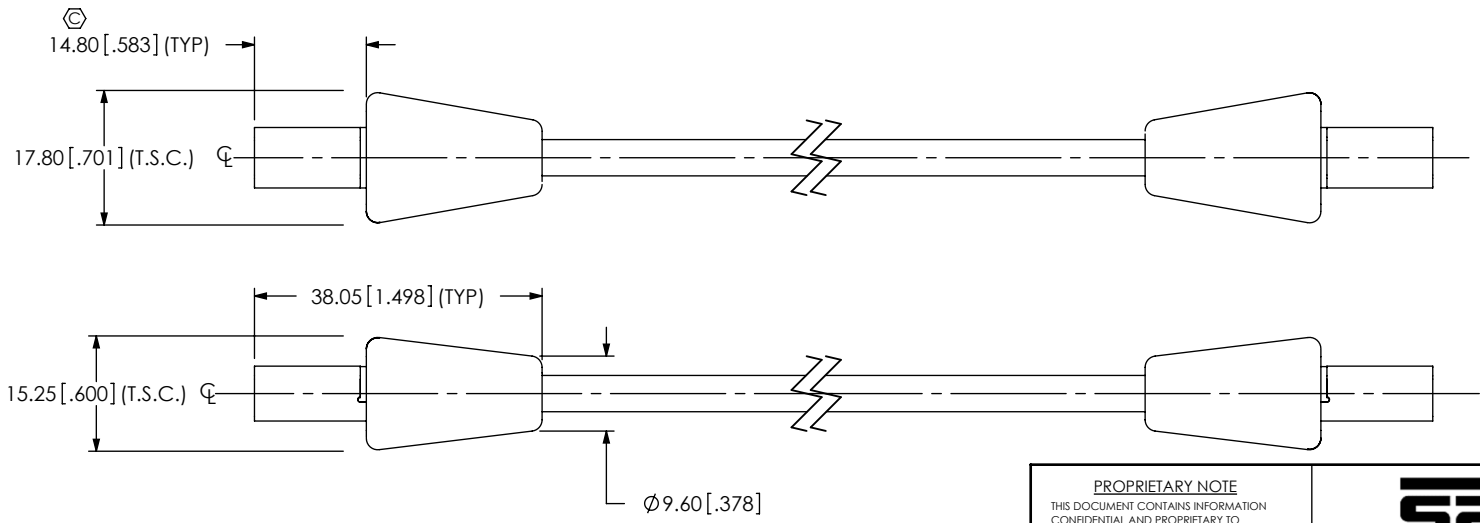
-BMS-BC: IN-PROCESS 6
 ADD USB-B-N-03-01
 (SAME AS -AMS-AMS: IN-PROCESS 6, EXCEPT AS SHOWN)
 (SEE NOTE 23)



-BMS-BC: IN-PROCESS 7
 ADD USB-B-N-02-01
 (SAME AS -AMS-AMS: IN-PROCESS 7, EXCEPT AS SHOWN)
 (SEE NOTE 23)



-BMS-BC: IN-PROCESS 8
 CRIMP SHELLS OVER BRAID AND TRIM SHIELD
 (SAME AS -AMS-AMS: IN-PROCESS 8, EXCEPT AS SHOWN)



-BMS-BC: IN-PROCESS 9
 PREMOLD
 (SAME AS -AMS-AMS: IN-PROCESS 9, EXCEPT AS SHOWN)

PROPRIETARY NOTE
 THIS DOCUMENT CONTAINS INFORMATION
 CONFIDENTIAL AND PROPRIETARY TO
 SAMTEC, INC. AND SHALL NOT BE REPRODUCED
 OR TRANSFERRED TO OTHER DOCUMENTS OR
 DISCLOSED TO OTHERS OR USED FOR ANY
 PURPOSE OTHER THAN THAT WHICH IT WAS
 OBTAINED WITHOUT THE EXPRESSED WRITTEN
 CONSENT OF SAMTEC, INC.

DO NOT SCALE DRAWING

SHEET SCALE: 1:1

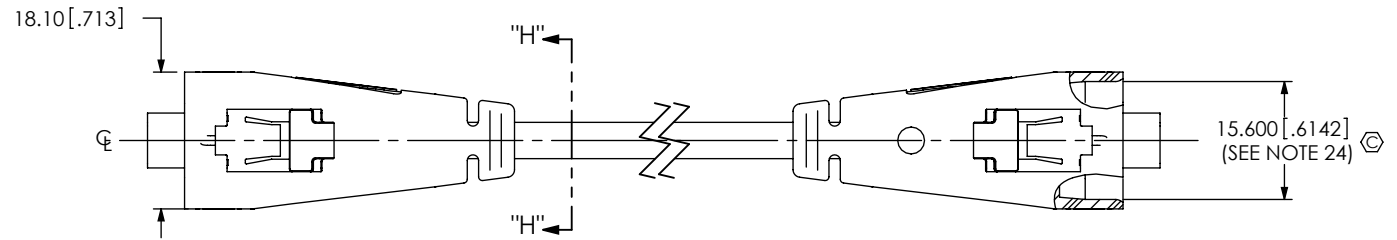
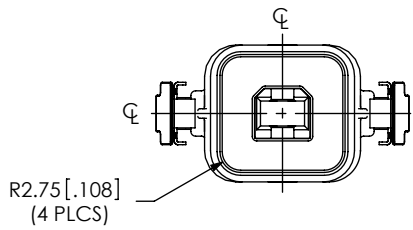
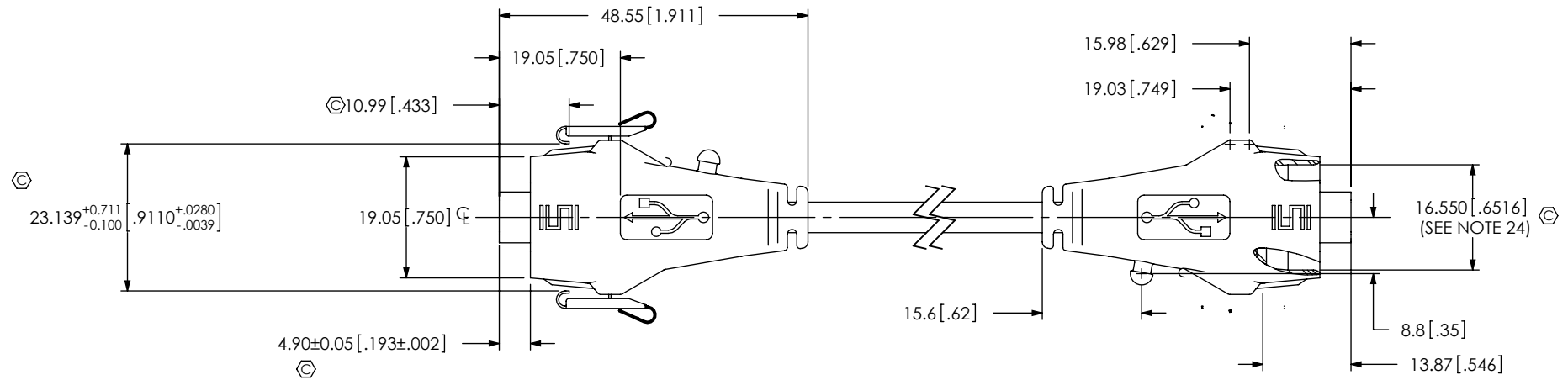


520 PARK EAST BLVD, NEW ALBANY, IN 47150
 PHONE: 812-944-6733 FAX: 812-948-5047
 e-Mail: info@SAMTEC.com code 55322

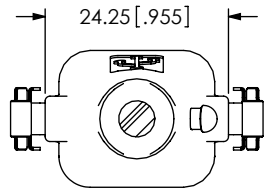
DESCRIPTION:
 RECTANGULAR CABLE USB

DWG. NO.
 RCU-X-XX.XX-XXX-XXX

BY: T NEWTON 02/17/2010 SHEET9 OF10



-BMS-BC: IN-PROCESS 10
OVERMOLD
(SAME AS -AMS-AMS: IN-PROCESS 10, EXCEPT AS SHOWN)



SECTION "H"-"H"

PROPRIETARY NOTE
THIS DOCUMENT CONTAINS INFORMATION CONFIDENTIAL AND PROPRIETARY TO SAMTEC, INC. AND SHALL NOT BE REPRODUCED OR TRANSFERRED TO OTHER DOCUMENTS OR DISCLOSED TO OTHERS OR USED FOR ANY PURPOSE OTHER THAN THAT WHICH IT WAS OBTAINED WITHOUT THE EXPRESSED WRITTEN CONSENT OF SAMTEC, INC.

DO NOT SCALE DRAWING

SHEET SCALE: 1:1



520 PARK EAST BLVD, NEW ALBANY, IN 47150
PHONE: 812-944-6733 FAX: 812-948-5047
e-Mail info@SAMTEC.com code 55322

DESCRIPTION: RECTANGULAR CABLE USB

DWG. NO. RCU-X-XX.XX-XXX-XXX

BY: T NEWTON 02/17/2010 SHEET 10 OF 10